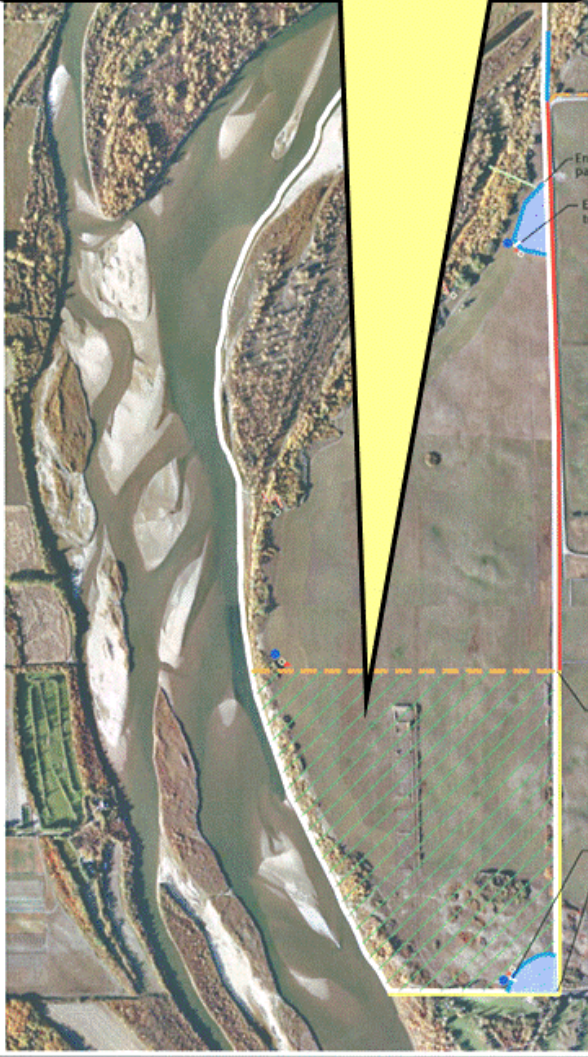
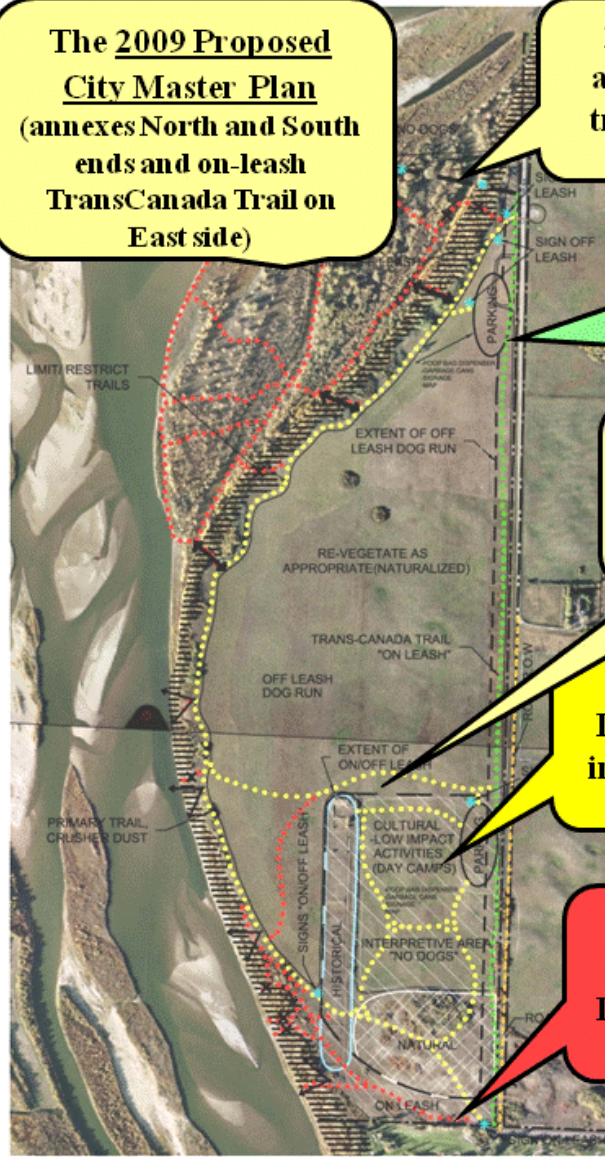


The 2006 City Plan annexes the South end of the park, below the line



The 2009 Proposed City Master Plan (annexes North and South ends and on-leash TransCanada Trail on East side)



10 acre NO DOG area includes rope trail down the hill, new parking lot

TransCanada Trail (green line) on E side (ON-LEASH)

Parking Lot and ON-LEASH Trail N of Interpretive Centre

NO DOG Interpretive Centre includes Rifle Range (blue)

ON-LEASH trail (red dots) S of Interpretive Centre No parking lot